

Stewards Pooi Kei College



香港神託會培基書院



📍 56 Siu Lek Yuen Road, Shatin

沙田小瀝源路56號

🌐 www.spkc.edu.hk

☎ 2345 4567

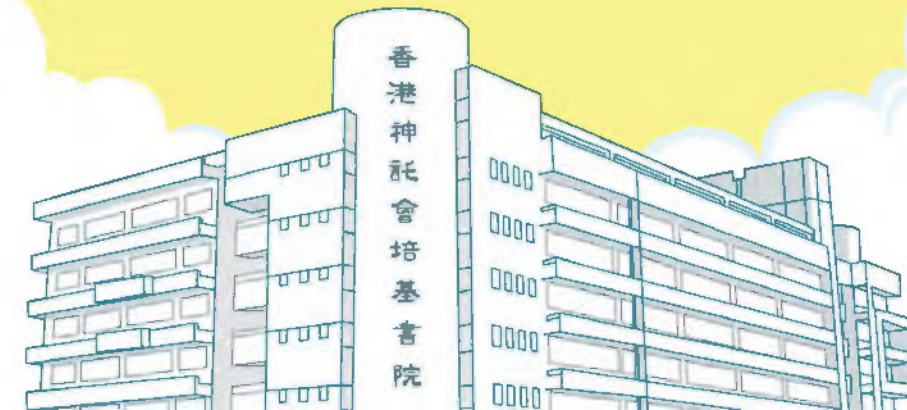
✉ info@spkc.edu.hk



*The fear of the Lord is the start of wisdom,
and the knowledge of the Holy One gives a wise mind.*

敬畏耶和華是智慧的開端，
認識至聖者便是聰明。

(Proverbs 箴言 9:10)





Vision & Mission

願景及使命

We envision developing SPKC into an outstanding DSS school with the purpose of cultivating Christian faith and educating Pooikeinians to be leaders and stewards of tomorrow.

成為一所優質的基督教英文直資中學，引領學生認識基督真理，培育他們成為明日領袖和神託的管家。

We aim at preparing tomorrow's leaders with character and intelligence.

我們致力培育一群才德兼備的明日領袖。

Pooikeinians Are... 培基人特質

S

Servant
Leaders
僕人領袖

· P

Positive
Thinkers
正向思維

· K

Keen
Learners
熱愛學習

· C

Confident
Explorers
勇於探索



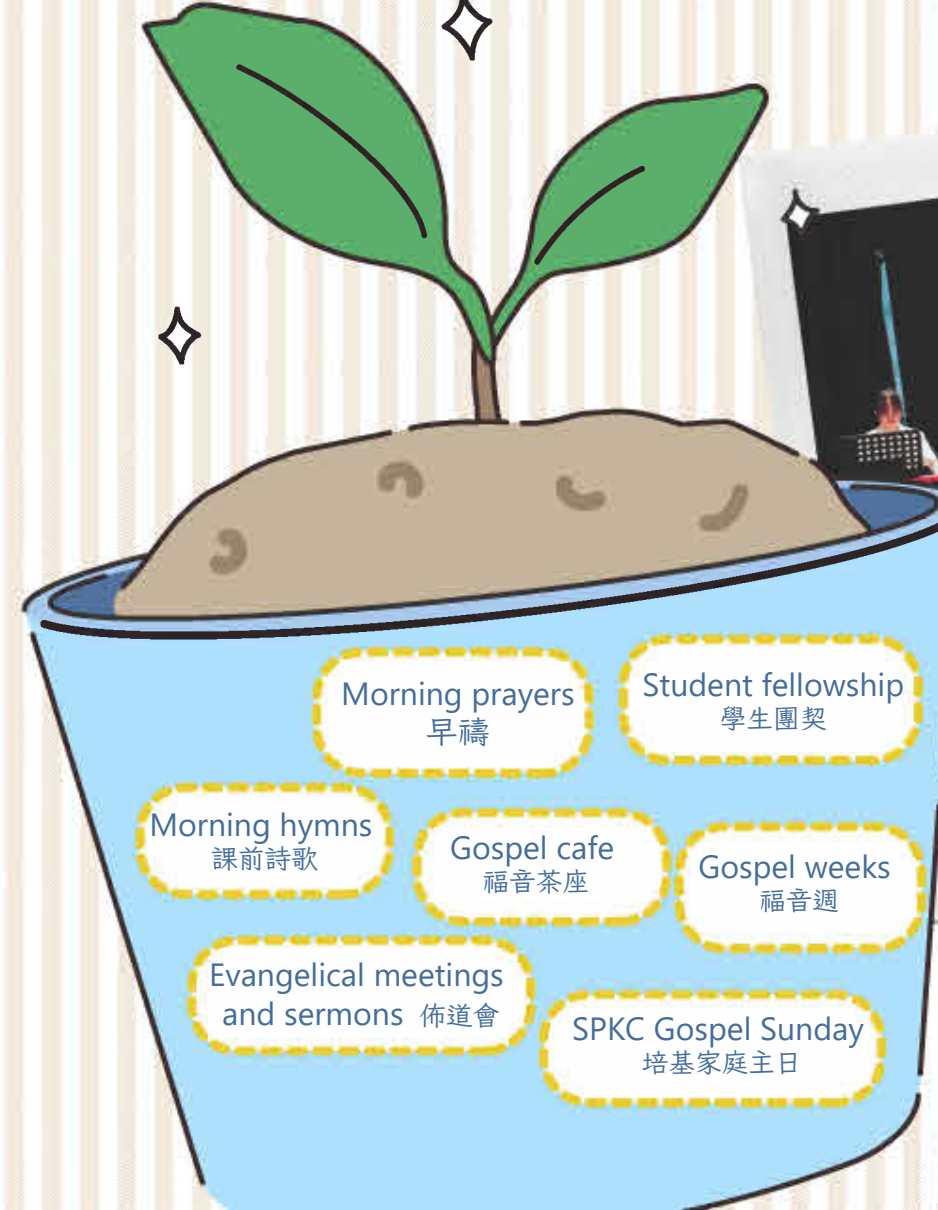
Christian Education

基督教
教育



Through Christianized spiritual and moral education with a professional attitude, we believe that it is of vital importance to let our students experience a healthy spiritual growth. Our school provides numerous channels to nurture students' good conduct and increase their strength of character through Christian love and faith.

本校十分重視對學生的靈性教育，透過基督教教育、德育課程和各種學習經驗，培養學生良好的品格。



Morning prayers
早禱

Student fellowship
學生團契

Morning hymns
課前詩歌

Gospel cafe
福音茶座

Gospel weeks
福音週

Evangelical meetings
and sermons 佈道會

SPKC Gospel Sunday
培基家庭主日

Personal-social-spiritual education
curriculum 校本生命成長課程

Christian book exhibition 基督教書展





SPKC as an EMI School

全英語
教學環境



SPKC as an EMI School 全英語教學環境

SPKC provides students with quality English language education in and out of the classroom. The small class teaching policy in our school enables our teachers to cater for learner diversity and maximize students' potential.

無論在教室內外，本校均為學生提供優質的英語課程。
本校實施小班教學， 因材施教， 讓學生發揮潛能。

A school-based introductory curriculum in junior forms with classic English Literature texts and language arts components
校本課程（包括初中英語文學、語言藝術等元素）

Drama education
starting from S1
戲劇教育（由中一級開始）

IGCSE & IELTS
Examination preparation
IGCSE及IELTS備試課程

Book appreciation
award scheme
閱讀獎勵計劃

Activities by English-based
CCA Teams & Clubs
多項英文科聯課活動

Award-winning English debating
team & drama club
屢獲殊榮的英語辯論隊、
戲劇學會

Still - our English anthology
英語文集: Still





Diversified School-based Curricula

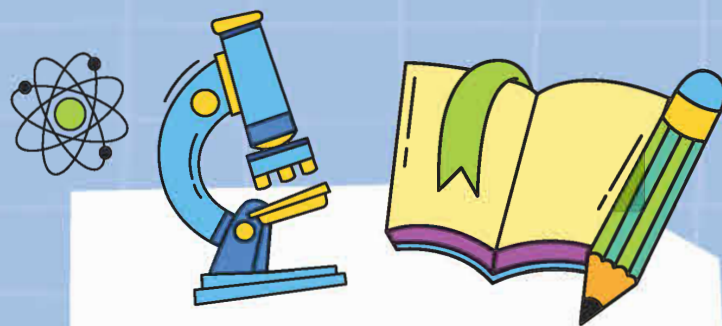
多元化
校本課程

International Advanced Level (IAL)

Starting from 2021/22, Pearson Edexcel IAL preparatory programs are offered as an alternative exam pathway to DSE for students' selection.

本校於 2021/22 年度起開辦 IAL 國際課程，為學生提供國際認可考試及升學途徑。

- 1 To provide an alternative curriculum for students who possess interest and ability in Mathematics and the Sciences .
- 2 To diversify our senior secondary curriculum which provides an alternative pathway to both local and overseas tertiary institutions.
- 3 To cater for the needs of students who plan to pursue further education overseas.
- 4 GCE / IAL syllabuses and assessments bear a high resemblance to those of the DSE, which is conducive to students' smooth transition from a local junior secondary curriculum to a non-local senior one.



- 1 為對數學和科學有興趣和具能力的學生提供多一個課程選擇。
- 2 為學生提供多一個高中課程選擇通往本地或海外高等教育院校。
- 3 照顧計劃到外國升學的學生之需要。
- 4 GCE/IAL 課程和評估與 DSE相似，與本地初中課程容易銜接。

Pooikeinians' Future Academy

Under the optimization of the senior secondary curriculum, the school has taken the opportunity to establish "Pooikeinians' Future Academy" (PFA). The Academy offers programmes aiming at equipping students with essential skills that will enable them to confidently face future challenges, while also encouraging them to explore their individual interests and passions for further development.



-  Internships
工作實習體驗
-  Introduction to 3D Animation
3D 動畫創作
-  Jewellery Design
珠寶設計
-  Metaverse
元宇宙
-  Minecraft Programming
Minecraft編程
-  Floor Curling
地板冰壺
-  Fencing
劍擊
-  Japanese
日語
-  French
法語
-  Forensic & Food Science
法證及食物科學
-  Ceramic Glazing
陶瓷
-  Korean
韓語
-  Everyone Can Code
編碼
-  Get Fit!
健身
-  German
德語

培基人未來學院

本校藉高中課程優化的機會成立了「培基人未來學院」，為學生提供一系列的課程，幫助學生裝備自己，使他們更有信心面對未來的挑戰，並鼓勵學生發掘自己的興趣和探索未來的發展路向。



Co-curricular Activities 聯課活動

SPKC places a strong emphasis on students' holistic development. Students are encouraged to participate in different co-curricular activities (CCA) and service teams. We hope to nurture students to be all-round leaders and enable them to develop the life-long learning capabilities that are needed in our ever-changing society.

本校重視學生全人發展，鼓勵學生參與不同的聯課活動和服務團隊，以培養他們成為全面的領袖，並具有終身學習的能力，以應付瞬息萬變的社會。



Servant Leader Academy 僕人領袖學院



Aims at providing a school-based mentoring system to train up current student leaders, the Servant Leader Academy provides school-based and external leadership training and service learning opportunities. Eminent students will be nominated to take part in a variety of outstanding student elections in Hong Kong to expand leaders' exposure and vision.

「僕人領袖學院」為校本學習課程，讓學生透過服務學習、校本及校外的領袖訓練，培育學生領袖。優秀學生將獲提名參加各項傑出學生選舉，以擴闊學生的見聞和視野。

Gifted Education 資優教育

To foster the multiple potentials of the gifted, we integrate elements of gifted education, i.e. higher-order thinking skills, creativity and personal-social competence, into the curriculum of regular classrooms for all students. The school-based talent pool was established for gifted students to stretch and nurture them with appropriate learning opportunities and challenges.

為發展學生的內在潛能，本校把資優教育的核心元素融入日常的課堂學習中，包括高階思維、創意思維、人際關係等，讓所有學生均有機會發揮所長。本校更建立了校本人才庫，為資優學生提供更多合適的學習機會。



Hostel Experience 住宿體驗

S2 Hostel Experience Programme was an initiative since 2022/23 with the aim to enhance students' self-management, social, and problem-solving skills while promoting simplicity in life. It gives students a valuable opportunity to develop independence, teamwork, critical thinking, and an appreciation for a simpler lifestyle. The experience brings unforgettable memories to all S2 students.

本校於2022/23學年開展中二級住宿體驗計劃，旨在提升學生的自我管理、社交和解決問題的能力，並推廣簡約生活。學生透過各種活動、學習獨立、建立團隊合作和慎思明辨的能力，並體會簡約生活的意義。這寶貴的體驗將成為所有中二級學生的難忘回憶。

Service Learning 服務學習

SPKC passionately promotes community service through a variety of events, including flag selling, beach clean-ups, food bank support, visits to the elderly, walkathons, fun days with visitors from Hong Kong Children's Hospital, and over-seas service trips. These events offer meaningful opportunities for students to embody the 12 priority values & attitudes and learn to be servant leaders.

本校鼓勵學生積極參與各種社會服務活動，包括賣旗、清潔沙灘、支持食物銀行、探訪長者、參加步行籌款、與兒童醫院合辦活動及參與海外服務活動等。透過這些有意義的服務學習活動，培養學生十二種首要的價值觀和態度，培育他們成為僕人領袖。





Global Education

拓展全球視野



Global Education at SPKC focuses on enhancing Pooikeinians' global competence and nurturing them as global citizens. We conduct varied Global Tuesday activities which introduce students to different cultures, e.g. Global Villages, dance and music appreciation sessions as well as foreign language challenges. By engaging students in immersive intercultural activities, students become more curious about the world and are motivated to discover more for themselves. Students' awareness towards global issues are also raised.

本校透過「全球視野星期二」活動，如「全球村莊」、舞蹈和音樂欣賞、外語挑戰活動等，讓學生認識世界各地不同的文化。透過這些跨文化活動，引起學生對認識全球各地的好奇心和興趣，使他們主動發掘更多，從而引發他們對全球議題的關注，提升學生對全球的認識，培育他們成為世界公民。



Exchange Students Programme 交流生計劃

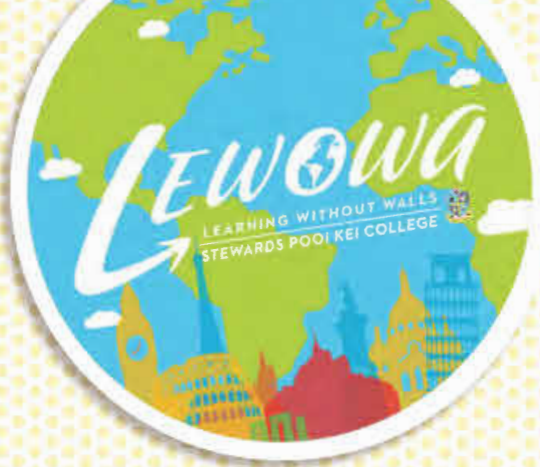
SPKC's exchange students programme is two-pronged in its approach. We encourage Pooikienians to participate in exchange programmes to study abroad and live with a host family, providing them with chances to interact with locals and explore the world. We also host overseas exchange students from various countries including Finland, Germany, Spain, Russia, USA and Colombia, etc. The exchange student becomes a true Pooikeinian: from attending regular lessons and being a member of our clubs and teams to taking part in our annual Athletics Meets and Life-wide Learning Day. Both the exchange students and our local students have benefited immensely from the exchange of cultures. Our goal is to empower Pooikeinians to respect and embrace various cultures.

本校鼓勵培基人參加海外交流計劃，透過入讀當地中學和入住接待家庭，學生與當地人有更深入的接觸，從而認識世界。本校每年亦接待來自世界各地的交流生，如芬蘭、德國、西班牙、俄羅斯、美國、哥倫比亞等。他們跟所有培基人一樣，會參與學校的常規課堂、聯課活動、運動會、全方位學習日等。透過日常的文化交流，學生學習接納和尊重不同的文化，交流生和本校學生均獲益良多。





LEWOWA 學習無疆界
Learning without Walls



Learning Without Walls (LEWOWA) is a school-based curriculum with local and overseas experiential learning programmes across S1 to S5 forms and classes. Pooikeinians develop into globalized Christian leaders through life-changing experiences during LEWOWA, and nurtured as Servant Leaders, Explorers, Adventurers, Life Planners, and Scholars. Students return from these LEWOWA programmes equipped to face the challenges ahead, and prepared to serve the world in different domains.

「學習無疆界」課程為本校校本課程，為中一級至中五級學生提供豐富多樣的本地和海外學習經驗。課程涵蓋五大類型，包括僕人領袖、勇於探索、冒險挑戰、生涯規劃和學術探究。透過各種學習活動，學生的生命得以改變，同時亦裝備自己，以迎接未來的挑戰，預備在世界上不同的範疇作服侍，將來成為具國際視野的基督徒領袖。

僕人領袖：
以基督的愛服侍社區
勇於探索：
發掘興趣和認識不同文化
冒險挑戰：
在城市和郊外進行歷奇活動
生涯規劃：
學習規劃職業與人生
學術探究：
在學科知識上進深研究

<p>Servant Leader <i>Serving in community under Christian value</i></p>	<p>Adventurer <i>Adventure sports in nature and cities</i></p>	<p>Scholar <i>Subject-based academic research</i></p>
<p>Explorer <i>Exploring various interests and cultures</i></p>	<p>Life Planner <i>Life and career planning</i></p>	



Pooikeinians' Footsteps

培基人足跡

Over the course of 20 years,
Pooikeinians have flown
over **657,500** km
過去20年，
培基人飛行達657,500 公里。

No. of participations
of local programmes: **8038**
參與本地課程人次：8038

No. of participations
of outbound programmes: **5280**
參與境外課程人次：5280

We have organized a total of
470 LEWOWA programmes.
本校共舉辦了470個
「學習無疆界」課程。

Pooikeinians have visited
26 countries throughout the years.
培基人在過去曾到訪26個國家。

PACIFIC OCEAN
太平洋

NORTH AMERICA
北美洲

ATLANTIC OCEAN
大西洋

SOUTH AMERICA
南美洲

ARCTIC OCEAN
北冰洋
128 Education Partners
we have worked with
曾與128個教育伙伴合作

「整全領袖訓練之旅」
重辦了13次，
並7次獲選為
最佳本地課程。

“Rainbow Touch —
Holistic Leadership Training Journey”
has been re-run for **13** years.
It has also been awarded
the Best Local Programme Award **7** times.

SOUTHERN OCEAN
南冰洋

Other than Hong Kong, Pooikeinians
have visited **23** cities in the Mainland
such as Beijing, Shanghai, Xian, Sichuan,
Guizhou, Greater Bay Area ...

除香港外，
培基人曾到訪23個國內城市，
包括北京、上海、西安、四川、
貴州及多個大灣區城市等。

“Seven Lessons from God”
has been awarded **7** times
as the Best Outbound Programme Award
and re-run for **7** years.

「上帝的七堂課」7次獲選為最佳境外課程，
共重辦了7次。

Pooikeinians took a flight of **9** hours from
Hong Kong to Melbourne (Australia) in 2024
and participated in short-distance flights under
the guidance of professional flight instructors.
The life-changing driving experience gave them
a deeper love and understanding of aviation.

培基人在2024年乘搭9小時飛機，
由香港前往澳洲墨爾本，
參加由專業飛行導師教授的短途
飛機駕駛訓練。
這難忘的駕駛經驗，
加深了他們對航空的認識和熱愛。

“Exploring the Faces of India”
has the longest duration
with **10** days.
為期十天的「尋找
印度的面貌」
是為期最長的課程。

AUSTRALIA
澳洲

INDIAN OCEAN
印度洋

EUROPE
歐洲

ASIA
亞洲

AFRICA
非洲

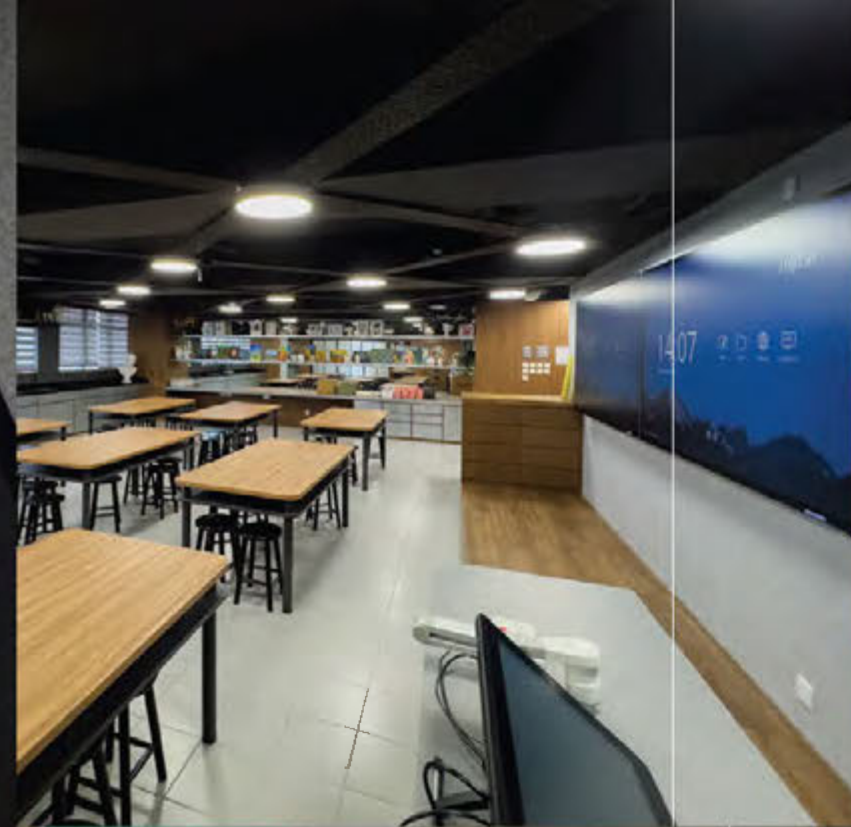




School Facilities

校園設施







*It takes a village
to raise a child.*

養育一個孩子需舉全村之力





Children learn best when the significant adults in their lives, i.e. parents and teachers, work together to encourage and support them. SPKC emphasizes the importance of home-school collaboration which helps ensure both the school and homes are responsive to students' unique needs and support children's overall development.

To support SPKC families, Abundant Grace Church, our partner church, has been hosting regular talks, workshops and groups for parents so as to help them understand the development needs of youngsters better.

Home-School Collaboration 家校合作

在孩子生命中最重要的人——父母和老師的鼓勵和支持下，學習效能會特別理想。本校強調家校合作的重要性，以確保學校和家庭均積極回應孩子的個別需要，一起支援孩子的整體發展。

本校伙伴教會基督教宣道會廣恩堂亦一直支持本校的家庭，定期舉辦講座、工作坊和小組，幫助家長更深了解青少年成長的需要。



Student financial assistance & Scholarship scheme 學生獎助學金計劃

A total amount of about two million dollars, 10% of the total tuition fee, will be budgeted for this purpose in every academic year.

Highlights of the scheme include:

每年學校均把學費收入的百分之十撥入此計劃，總額接近港幣二百萬元，其中包括：

All-round Development Scholarship	全人發展獎學金
Academic Excellence Scholarship	學業卓越獎學金
Outstanding CCA / OLE Performance Scholarship	聯課活動/其他學習經歷傑出表現獎學金

For eligible pre-S1 students 為中一新生而設

Tomorrow's Leader Scholarship	明日領袖獎學金
Promising Student Scholarship	明日之星獎學金
Primary School Principal Recommendation Scholarship	小學校長推薦獎學金

School Fee Remission (學費減免)
Student Activity Subsidies (學生活動資助)
Emergency Family Support (緊急家庭支援)
LEWOWA Subsidies (學習無疆界資助)



School Fee Remission 學費減免

Objective 目標

The School will make sure students' studies in Stewards Pooi Kei College (SPKC) will not be hindered by financial difficulties.
學校會確保家長的財政狀況不會影響學生就讀香港神託會培基書院的機會

Principles 原則

- 1. The School primarily follows the rules and regulations of the Student Financial Assistance Schemes administered by the Working Family and Student Financial Assistance Agency (Student Finance Office) and Education Bureau (EDB) to award FULL assistance or HALF assistance to applicants. If parents have not made applications to the Student Finance Office (SFO), the School will refer to the Means Test specified by the SFO for assessment. For those applicants who fail in the Means Test, the School will further consider their applications on a case-by-case basis. Students from families under Comprehensive Social Security Assistance Scheme (CSSA) will be given full assistance. If necessary, the School may request parents to provide relevant proof. 學校會以在職家庭及學生資助辦事處（學生資助處）財政資助計劃及教育局的守則為準則批出全額資助或半額資助。若家長未有向學生資助辦事處作出申請，校方將按學生資助處的評估方法作出批核。若申請者未能符合有關資格，校方則會按個別情況作出批核。 申領綜合社會保障援助計劃之家庭，其子女可享全額資助。在有需要時，學校可能會要求家長提供具體證明。
- 2. The School respects the privacy of all applicants and follows the guidelines of the Office of the Privacy Commissioner for Personal Data, Hong Kong (PCPD) on handling all the applications. 學校尊重所有申請者的私隱，並遵照香港個人資料私隱專員公署的指引處理所有申請程序。
- 3. With reference to the Student Finance Office, the school adopted the following means test to assess the eligibility of a family for student financial assistance and its assistance level. Based on the following formula, the “Adjusted Family Income” (AFI) mechanism will be used: 參考「學生資助處」的資格評估方法後，本校將採用「調整後家庭收入」機制進行入息審查，以評定申請人的資助資格及幅度。「調整後家庭收入」機制所採用的算式如下：

AFI =

Gross annual income of the family

Number of family members + (1)

「調整後家庭收入」=

家庭全年總收入

家庭成員人數 + (1)

Gross annual income of the family includes the annual income of the applicant and his / her spouse; 30% of the annual income of unmarried child / children residing with the family if applicable; and contribution from relatives / friends if applicable. (Excluding Mandatory Provident Fund or Provident Fund contribution by employee in calculation.)
家庭全年總收入包括申請人及其配偶的全年收入，與申請人家庭同住的未婚子女的全年收入的 30%（如適用），以及親友給予的津貼(如適用)。（計算時不包括僱員強積金及公積金供款）
The members of a family normally refer to the applicant, his / her spouse, unmarried child / children residing with the family and the dependent parent(s) who are supported by the applicant and / or his / her spouse. 家庭成員通常是指申請人、申請人的配偶、與申請人家庭同住的未婚子女，以及由申請人及/或其 配偶供養的父母。
For single-parent families of 2 to 3 members, the 'plus 1 factor' in the divisor of AFI formula will be increased to 2. 二至三人的單親家庭，公式中除數的（+1）將會增加至（+2）。

Level of Fee Remission 學費減免幅度

The AFI eligibility benchmarks for various levels of assistance in the 2024/25 school year are listed below. Please note that the AFI is not the average monthly income of a family.
下表詳列2024/25學年的「調整後家庭收入」組別的資助幅度。 請注意「調整後家庭收入」並不是家庭每月的平均收入。

AFI Groups (HK\$)	Level of Assistance	「調整後家庭收入」編制下數值	資助幅度
0 - 44,495	Full*	0 至 44,495	全額*
44,496 - 86,093	Half	44,496 至 86,093	半額
>86,093	Ineligible	超過 86,093	不合資格

The ceiling of deductible medical expenses for each family member is \$23,310 per year in 2024/25. 2024/25 學年每名家庭成員可扣減的醫療開支上限為全年 23,310 元。

* The AFI thresholds for full level of assistance for 3-member and 4-member families are \$53,868 and \$49,559 respectively in the2024/25 school year. For 2-member single-parent families and 3-member single-parent families, they are regarded as 3-member families and 4-member families respectively for determining the AFI thresholds for full level of assistance and calculation of AFI. 2024/25 學年 3人家庭和4人家庭可獲全額資助的「調整後家庭收入」上限分別為 \$53,868和\$49,559。就2人和3人單親家庭而言，有關家庭會分別被視為3人和4人家庭，以決定可獲資助的「調整後家庭收入」 上限及計算「調整後家庭收入」。

