

THE FEAR OF THE LORD IS THE START OF WISDOM, AND
THE KNOWLEDGE OF THE HOLY ONE GIVES A WISE MIND.
(PROVERBS 9:10)

敬畏耶和華是智慧的開端，認識至聖者便是聰明。(箴言 9:10)

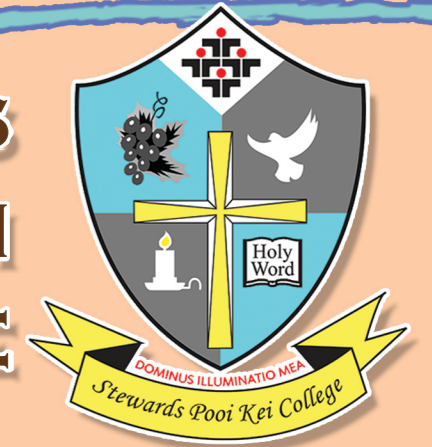
Address: 56 Siu Lek Yuen Road, Shatin
沙田小瀝源路56號

Tel: 2345 4567
Fax: 2635 0100

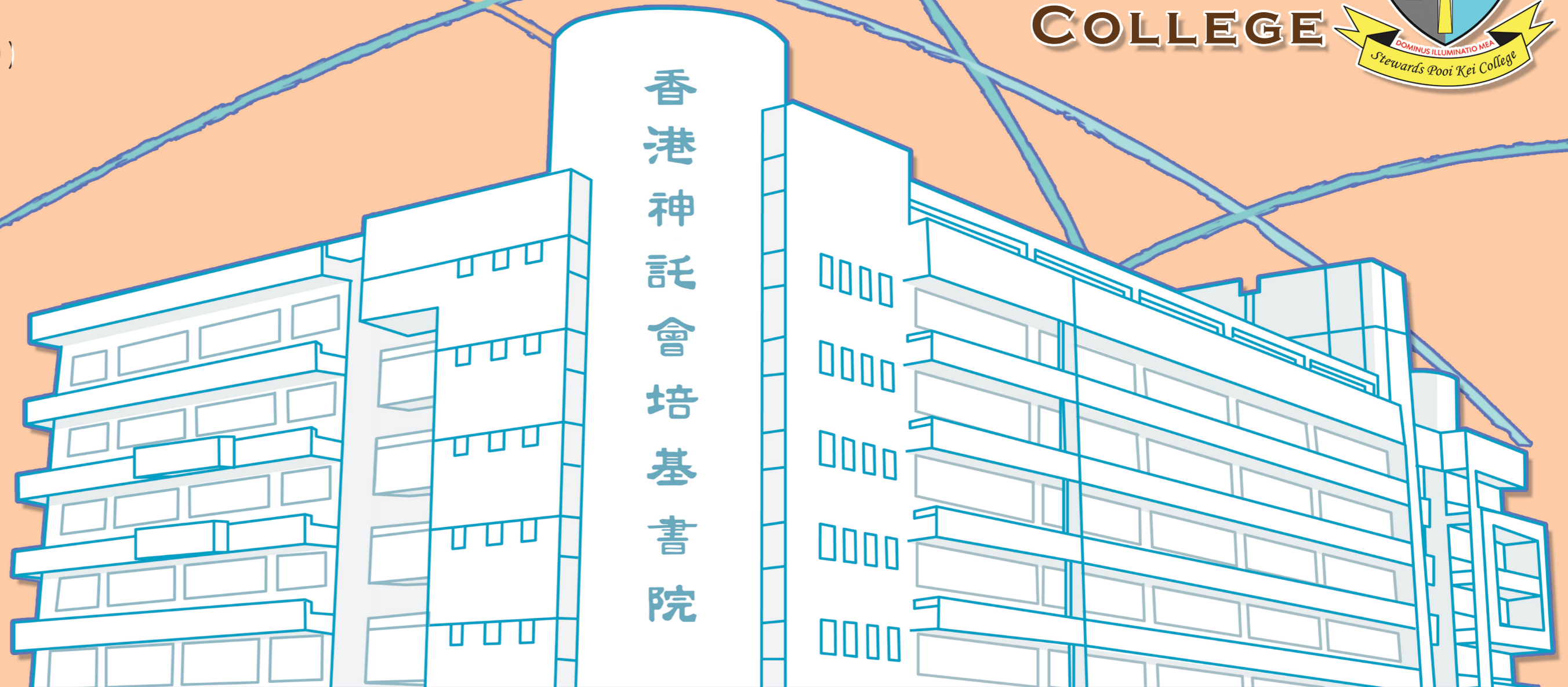
Email: info@spkc.edu.hk
Web: www.spkc.edu.hk



STEWARDS
POOI KEI
COLLEGE



香港神託會培基書院





願景及使命

VISION AND MISSION

We aim at preparing tomorrow's leaders with character and intelligence.
我們致力培育一群才德兼備的明日領袖。

To become an outstanding English DSS school with the purpose of
cultivating Christian faith and educating our students to be leaders
and stewards of tomorrow.

成為一所優質的基督教英文直資中學, 引領學生認識基督真理, 培育
他們成為明日領袖和神託的管家。

POOIKEINIANS ARE...
SERVANT LEADERS
POSITIVE THINKERS
KEEN LEARNERS
CONFIDENT EXPLORERS

培基人特質

致力成為僕人領袖
擁有正面思維
熱愛學習
勇於探索



CHRISTIAN EDUCATION

嗒呀悔悔ナ

Through Christianized spiritual and moral education with a professional attitude, we believe that it is of vital importance to let our students experience a healthy spiritual growth. Our school provides numerous channels to nurture students' good conduct and increasing their strength of character through Christian love and faith.

本校十分重視對學生的靈性教育，冀望透過基督教教育、德育課程和各種學習經驗，培養學生良好品格。



每週敬拜

Weekly worship

每週團契

Weekly fellowship

福音分享

Gospel sharing

校本生命成長課程

Personal-social-spiritual education curriculum

佈道會

Evangelical meetings and sermons

福音茶座

Gospel cafe

基督教書展

Christian book exhibition



全英語教學環境 SPKC AS AN EMI SCHOOL



We feature:

- A school-based introductory curriculum in junior forms (for English Literature and NSS modules) & Drama education starting from S1;
- Book appreciation award scheme;
- IGCSE and IELTS examination preparation;
- SPKC Radio;
- English speaking days and activities by English Society;
- Still — our English anthology;
- Award-winning debating team & drama club.

SPKC provides students with quality English language education in and out of the classroom. The small class teaching policy in our school enables our teachers to cater for learner diversity and maximize students' potential.

無論在教室內外，本校均為學生提供優質的英語課程。本校實施小班教學，因材施教，讓學生發揮潛能。



課程特色及配合措施：

- 校本課程（包括初中英語文學、新高中先導課程及由中一級開始戲劇教育）；
- 閱讀獎勵計劃；
- IGCSE 及 IELTS 備試課程；
- 校園電台；
- 英語日及英文學會活動；
- 英語文集：Still；
- 屢獲殊榮的辯論隊、戲劇學會。



GLOBALIZED VISION | 姿廢嫻

SPKC is devoted to cultivating intercultural awareness and sound understanding of world issues.

Learning Without Walls (LEWOWA) provides students with diverse experiential-learning programs outside the classroom, including exchange sessions, visits, services, lectures, skill training, etc. We have been to over 50 cities around the world. To see more of our footsteps, please scan the QR code.

本校竭力培養學生的多元文化意識，並拓展他們的國際視野。「學習無疆界」課程為學生提供豐富多樣的學習經驗，包括：學習交流、探訪、社區服務、講座、訓練等，足跡遍佈全球逾五十個城市。如欲了解更多，請掃描QR code登入網頁瀏覽。



Based in school, we have International Awareness Week and Intercultural Forums, via which students have a taste of cultures from different places.

本校每年亦舉辦「國際視野週」和「文化論壇」，讓學生接觸不同地方的文化。



DIVERSIFIED SCHOOL-BASED CURRICULA

多元化校本課程

Other than Learning Without Walls, we also offer school-based curricula to best cater for learner diversity and individual needs. 除學習無疆界外，本校亦提供多元化的校本課程，以照顧學生的學習多樣性和學習需要。



International Advanced Level (IAL)

Pearson Edexcel IAL preparatory programs will be offered in 2021/22 as an alternative exam pathway to DSE for students' selection.

本校將於 2021/22 年度開辦 IAL 國際課程，為學生提供國際認可考試及升學途徑。

Servant Leader Academy 僕人領袖學院

Aims at providing a school-based mentoring system to train up current student leaders, the Servant Leader Academy provides school-based and external leadership training and service learning opportunities. Eminent students will be nominated to take part in a variety of outstanding student elections in Hong Kong to expand leaders' exposure and vision.

「僕人領袖學院」為校本學習課程，讓學生透過服務學習，並為學生提供校本及校外的領袖訓練，以培育學生領袖。優秀學生將獲提名參加各項傑出學生選舉，以擴闊學生的見聞和視野。



Gifted Education 資優教育

To foster the multiple potentials of the gifted, we integrate elements of gifted education, i.e. higher-order thinking skills, creativity and personal-social competence, into the curriculum of regular classrooms for all students. The school-based talent pool was established for gifted students to stretch and nurture them with appropriate learning opportunities and challenges.

為發展學生的內在潛能，本校把資優教育的核心元素融入日常的課堂學習中，包括高階思維、創意思維、人際關係等，讓所有學生均有機會發揮所長。本校更建立了校本人才庫，為資優學生提供更多合適的學習機會。

E-Learning

- > BYOD
- > learning apps
- > flipped classroom
- > one teacher one iPad
- > workshops for teachers, parents & students
- > wifi & 10 GB Ethernet

E-Administration

- > Smart cards for attendance taking & library circulation services
- > e-notice & e-payment
- > e-class app for parents

Multi-media Creative Centre

- > Multi-media Unit Channel
- > camera work & presentation skills
- > social issues & popular cultures exploration

E-CAMPUS 電子校園

電子教學

自攜平板電腦計劃
活用各種學習應用程式
翻轉課室

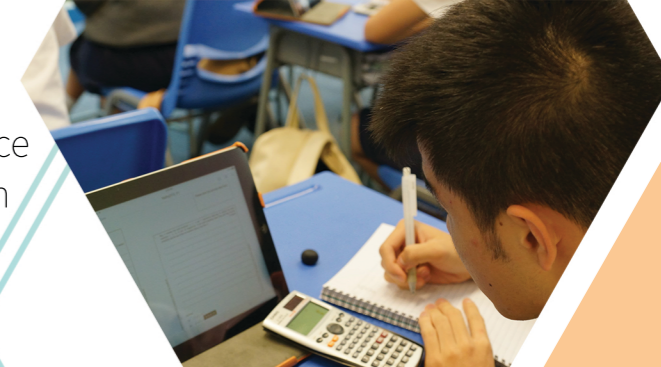
一教師一平板電腦
教師、家長、學生工作坊
無線網絡及 10 GB 乙太網覆蓋全校

電子行政

智能卡點算出席及借書服務
電子通告及繳費
E-class 家長應用程式

多媒體創意中心

培基頻道
提升學生拍攝及表達技巧
探索社會議題及流行文化



OUR NEW FACILITIES



MC²

(MULTI-MEDIA CREATIVE CENTRE)

MC² is dedicated to cultivate the interests of media production. Students can also gain hands-on training of practical skills, e.g. rendering and editing, with advanced equipment. 多媒體創意中心旨在培養學生對多媒體創作的興趣，中心以先進的設備，為學生提供有關領域的技能培訓。

ZONE D

The School has renovated the covered playground into a multi-purpose facility, suitable for PE lessons, form assemblies and all kinds of gatherings. It also provides a sanctuary for spiritual activities. 有蓋操場改裝後，成為體育課、週會及各式聚會場地，亦為屬靈活動提供一個寧靜舒適的環境。

With a library of over 25,000 items, multi-function rooms and self-study partitions, the learning centre is a well-furnished and resourceful facilitator of the evergrowing demands in information, literary and self-motivated learning.

LEARNING CENTRE

每逢星期二、四，校園電台分別有英語及普通話廣播節目，讓學生嘗嘗擔任節目主播、技術支援人員、編劇及聲演的滋味。校園電台同時為學會和校隊提供宣傳平台，發佈校園的最新資訊。

Our radio station provides students opportunities to be hosts, technicians, script writers and performers of radio shows. English programs and putonghua shows are scheduled on Tuesdays and Thursdays respectively. Other teams and clubs in school can also use the radio station for promotional purposes.

RADIO STATION

The black box theatre is home to our school's play productions and other performances with professional technical arrangements and efficacious lecture hall design.

BLACK BOX THEATRE

新近落成的「黑盒劇場」採用靈活的演講廳設計，配以專業的技術裝備，為本校戲劇製作及表演節目提供理想場地。

To see other school facilities



學習中心館藏25000項目，備有多用途學習室及獨立自修間，為學生提供一個資源豐富的學習平台，促進自主學習。

FITNESS CENTRE

The fitness centre is divided into 4 areas with a good selection of 18 different gym machines, for cardiovascular, strength, and multi-functional training for a full complete workout, to cover the training needs of all students and athletic teams.

體適能中心分為四個區域，精選十八種體育器械，為學生提供全面的體能鍛鍊，包括：有氧訓練、力量雙功能訓練等，以照顧學生和校隊的練習需要。



STUDENT FINANCIAL ASSISTANCE & SCHOLARSHIP SCHEME

學生獎助學金計劃

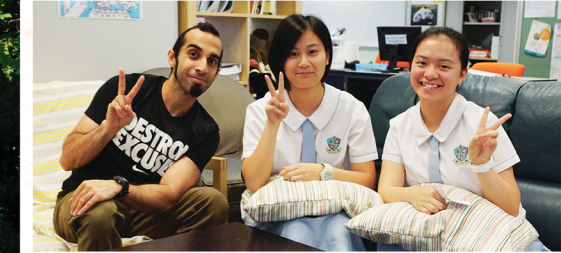
A total amount of about two million dollars, 10% of the total tuition fee, will be budgeted for this purpose in every academic year. Highlight of the scheme includes:

每年學校均將學費收入百分之十投放於此計劃內，總額接近港幣二百萬。其中項目包括：

- > School Fee Remission 學費減免
- > Student Activity Subsidies 學生活動資助
- > Emergency Family Support 緊急家庭支援
- > LEWOWA Subsidies 學習無疆界資助

For eligible pre-S1 students
為中一新生而設
> Principal's Admission Scholarship
校長新生獎學金

- > All-round Development Scholarship 全人發展獎學金
- > Academic Excellence Scholarship 學業卓越獎學金
- > Outstanding CCA / OLE Performance Scholarship
聯課活動/其他學習經歷傑出表現獎學金



School Fee Remission 學費減免

Objective 目標

The School will make sure students' studies in Stewards Pooi Kei College (SPKC) will not be hindered by financial difficulties. 本校會確保家長的財政狀況不會影響學生就讀香港神託會培基書院的機會。

Principles 原則

The School primarily follows the rules and regulations of the Student Financial Assistance Schemes administered by the Working Family and Student Financial Assistance Agency (Student Finance Office) and the Education Bureau (EDB) to award FULL assistance or HALF assistance to applicants. If parents have not made applications to the Student Finance Office (SFO), the School will refer to the Means Test specified by the SFO for assessment. For those applicants who fail in the Means Test, the School will further consider their applications on a case-by-case basis. Students from families under Comprehensive Social Security Assistance Scheme (CSSA) will be given full assistance. If necessary, the School may request parents to provide relevant proof.

學校會以在職家庭及學生資助辦事處（學生資助處）財政資助計劃及教育局的守則為準則批出全額資助或半額資助。若家長未有向學生資助辦事處作出申請，校方將按學生資助處的評估方法作出批核。若申請者未能合乎有關資格，校方則會按個別情況作出批核。申領綜合社會保障援助計劃之家庭，其子女可享全額資助。在有需要時，學校可能會要求家長提供具體證明。

The School respects the privacy of all applicants and follows the guidelines of the Office of the Privacy Commissioner for Personal Data, Hong Kong (PCPD) on handling all the applications. 學校尊重所有申請者的私隱，並遵照香港個人資料私隱專員公署的指引處理所有申請程序。

With reference to the Student Finance Office, the School adopted the following means test to assess the eligibility of a family for student financial assistance and its assistance level. Based on the following formula, the "Adjusted Family Income" (AFI) mechanism will be used: 參考「學生資助處」的資格評估方法後，本校會採用「調整後家庭收入」機制進行入息審查，以評定申請人的資助資格及幅度。「調整後家庭收入」機制所採用的算式如下：

$$AFI = \frac{\text{Gross annual income of the family}}{\text{Number of family members} + (1)}$$

$$\text{「調整後家庭收入」} = \frac{\text{家庭全年總收入}}{\text{家庭成員人數} + (1)}$$

Gross annual income of the family includes the annual income of the applicant and his / her spouse; 30% of the annual income of the unmarried child / children residing with the family if applicable; and the contribution from relatives / friends if applicable. (Mandatory Provident Fund or Provident Fund contribution by the employee is not included.) 家庭全年總收入包括申請人及其配偶的全年收入，與申請人家庭同住的未婚子女的全年收入的30% (如適用)，以及親友給予的津助(如適用)。(計算時不包括僱員強積金及公積金供款)

The members of a family normally refer to the applicant, his / her spouse, unmarried child / children residing with the family and the dependent parent(s) who are supported by the applicant and / or his / her spouse. For single-parent families of 2 to 3 members, the 'plus 1 factor' in the divisor of the AFI formula will be increased to 2. 家庭成員通常是指申請人、申請人的配偶、與申請人家庭同住的未婚子女，以及由申請人及/或其配偶供養的父母。二至三人的單親家庭，公式中除數的 (+1) 將會增加至 (+2)。

Level of Fee Remission 學費減免幅度

The AFI eligibility benchmarks for various levels of assistance in the 2021/22 school year are listed below. Please note that the AFI is not the average monthly income of a family. 下表詳列2021/22學年的「調整後家庭收入」組別的資助幅度。請注意「調整後家庭收入」並不是家庭每月的平均收入。

AFI Groups between (HK\$) 「調整後家庭收入」機制下數值介乎(港元)	Level of Assistance 資助幅度
0 - 41,360	Full* 全額*
41,361 - 79,976	Half 半額
> 79,976	Ineligible 不合資格

The ceiling of deductible medical expenses for each family member is \$21,670 per year in 2021/22. 2021/22學年每名家庭成員可扣減的醫療開支上限為全年 21,670 元。

* The AFI thresholds for full level of assistance for 3-member and 4- member families are \$50,323 and \$46,297 respectively in the 2020/21 school year. For 2-member single-parent families and 3-member single-parent families, they are regarded as 3-member families and 4-member families respectively for determining the level of assistance. 2020/21學年3人家庭和4人家庭可獲全額資助的「調整後家庭收入」上限分別為 \$50,323和\$46,297。就2人和3人單親家庭而言，有關家庭會分別被視為3人和4人家庭，以決定可獲資助的幅度。

An online AFI Simulator is available at the school website for the preliminary estimation of the assistance level. 本校提供網上「調整後家庭收入」模擬計算器作為初步計算資助幅度的參考，詳情請瀏覽本校網頁。



2021/22 School Fee 學費

Level 級別	Annual School Fee 全年學費
S1	HK\$25,410