

# STEWARDS POOI KEI COLLEGE

香港神託會培基書院



The fear of the Lord is the start of wisdom,  
and the knowledge of the Holy One gives a wise mind.

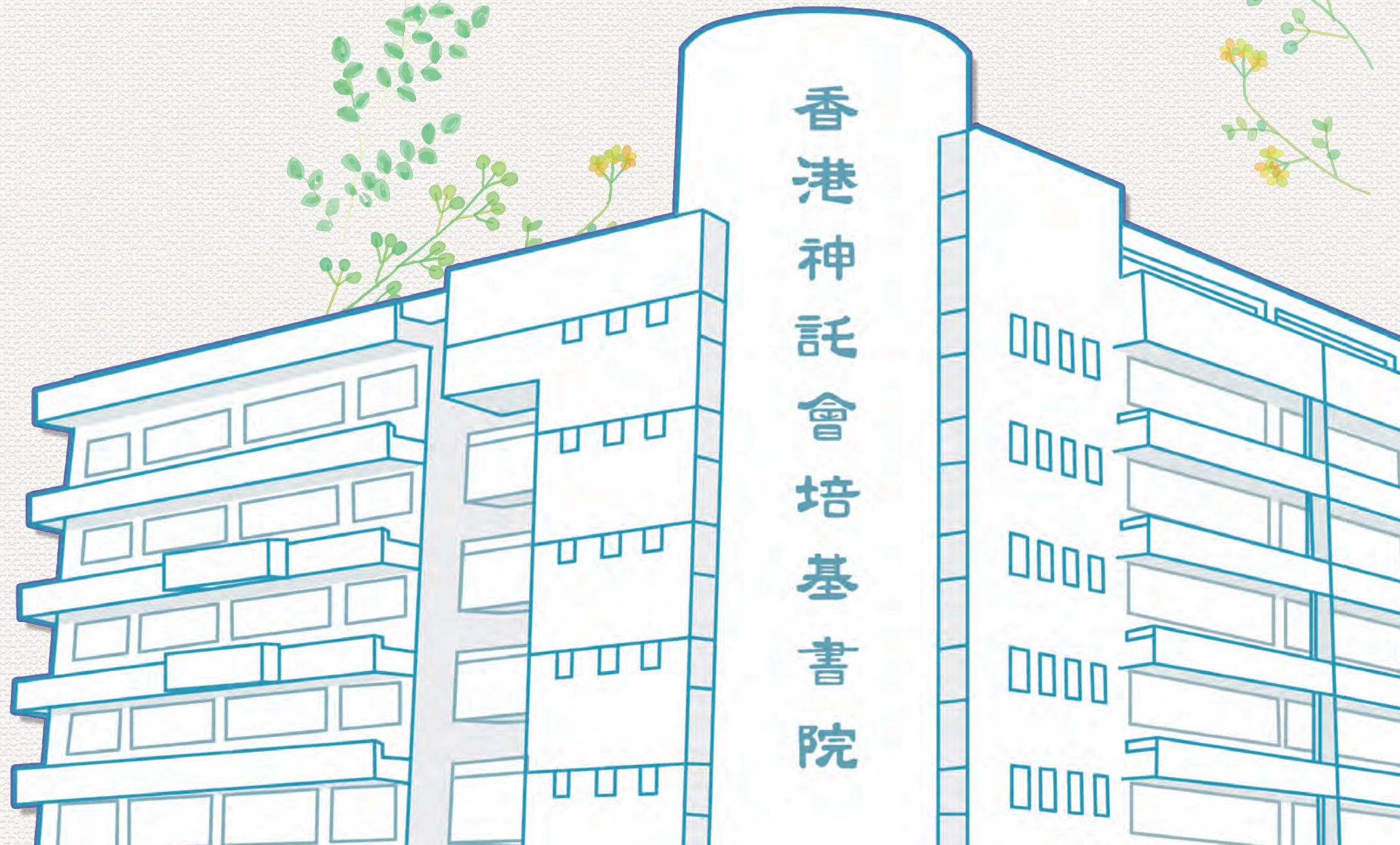
敬畏耶和華是智慧的開端, 認識至聖者便是聰明。

(Proverbs 箴言 9:10)

📍 56 Siu Lek Yuen Road, Shatin  
沙田小瀝源路56號

☎ 2345 4567  
☎ 2635 0100

✉ info@spkc.edu.hk  
🌐 www.spkc.edu.hk







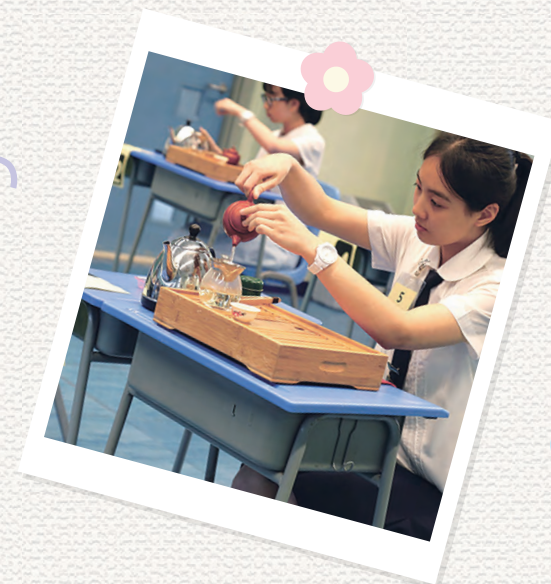
## Vision and Mission 願景及使命

We envision developing SPKC into an outstanding DSS school with the purpose of cultivating Christian faith and educating Pooikeinians to be leaders and stewards of tomorrow.

成為一所優質的基督教英文直資中學，引領學生認識基督真理，培育他們成為明日領袖和神託的管家。

We aim at preparing tomorrow's leaders with character and intelligence.

我們致力培育一群才德兼備的明日領袖。



Pooikeinians Are 培基人特質	
✓ Servant Leaders	僕人領袖
✓ Positive Thinkers	正向思維
✓ Keen Learners	熱愛學習
✓ Confident Explorers	勇於探索





## Christian Education 基督教教育



Through Christianized spiritual and moral education with a professional attitude, we believe that it is of vital importance to let our students experience a healthy spiritual growth. Our school provides numerous channels to nurture students' good conduct and increase their strength of character through Christian love and faith.

本校十分重視對學生的靈性教育, 透過基督教教育、德育課程和各種學習經驗, 培養學生良好的品格。



Daily hymn sharing  
詩歌分享

Weekly fellowship  
每週團契

Gospel sharing  
福音分享

Personal-social-spiritual  
education curriculum  
校本生命成長課程

Evangelical meetings and  
sermons  
佈道會

Gospel cafe  
福音茶座

Christian book exhibition  
基督教書展

## SPKC as an EMI School 全英語教學環境



SPKC provides students with quality English language education in and out of the classroom. The small class teaching policy in our school enables our teachers to cater for learner diversity and maximize students' potential.

無論在教室內外, 本校均為學生提供優質的英語課程。本校實施小班教學, 因材施教, 讓學生發揮潛能。

A school-based introductory curriculum in junior forms (for English Literature and NSS modules) & Drama education starting from S1  
校本課程 (包括初中英語文學、新高中先導課程及由中一級開始戲劇教育)

Book appreciation award scheme

IGCSE and IELTS examination preparation  
IGCSE 及 IELTS 備試課程

Still — our English anthology 英語文集: Still

English speaking days and activities by English Society  
英語日及英文學會活動

Award-winning debating team & drama club  
屢獲殊榮的辯論隊、戲劇學會

SPKC Radio 校園電台







Boading Pass

Name of Passenger

FRA  
NAT

Gate

C16

Boading Time

1255



SPKC is devoted to cultivating intercultural awareness and sound understanding of world issues. Learning Without Walls (LEWOWA) provides students with diverse experiential-learning programs outside the classroom, including exchange sessions, visits, services, lectures, skill training, etc. We have been to over 50 cities around the world. To see more of our footsteps, please scan the QR code.

本校竭力培養學生的多元文化意識，並拓展他們的國際視野。「學習無疆界」課程為學生提供豐富多樣的學習經驗，包括：學習交流、探訪、社區服務、講座、訓練等，足跡遍佈全球逾五十個城市。如欲了解更多，請掃描QR code瀏覽。

Based in school, we have International Awareness Week and Intercultural Forums, via which students have a taste of cultures from different places.

本校每年亦舉辦「國際視野週」和「文化論壇」，讓學生接觸不同地方的文化。





## Diversified school-based curricula 多元化校本課程

Other than Learning Without Walls, we also offer school-based curricula to best cater for learner diversity and individual needs.

除學習無疆界外, 本校亦提供多元化的校本課程, 以照顧學生的學習多樣性和學習需要。

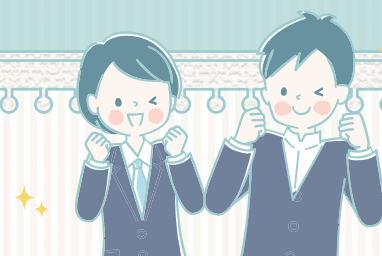
### International Advanced Level (IAL)



Starting from 2021/22, Pearson Edexcel IAL preparatory programs are offered as an alternative exam pathway to DSE for students' selection.

本校於 2021/22 年度起開辦 IAL 國際課程, 為學生提供國際認可考試及升學途徑。

### Servant Leader Academy 僕人領袖學院



Aims at providing a school-based mentoring system to train up current student leaders, the Servant Leader Academy provides school-based and external leadership training and service learning opportunities. Eminent students will be nominated to take part in a variety of outstanding student elections in Hong Kong to expand leaders' exposure and vision.

「僕人領袖學院」為校本學習課程, 讓學生透過服務學習、校本及校外的領袖訓練, 培育學生領袖。優秀學生將獲提名參加各項傑出學生選舉, 以擴闊學生的見聞和視野。

### Gifted Education 資優教育

To foster the multiple potentials of the gifted, we integrate elements of gifted education, i.e. higher-order thinking skills, creativity and personal-social competence, into the curriculum of regular classrooms for all students. The school-based talent pool was established for gifted students to stretch and nurture them with appropriate learning opportunities and challenges. 為發展學生的內在潛能, 本校把資優教育的核心元素融入日常的課堂學習中, 包括高階思維、創意思維、人際關係等, 讓所有學生均有機會發揮所長。本校更建立了校本人才庫, 為資優學生提供更多合適的學習機會。



## E-Campus 電子校園



### E-Learning 電子教學

- 1to1 iPad Learning Programme for Whole School
- Interactive learning apps
- Google Workspace
- Flipped classroom
- Classroom 3.0 supporting learning in the 21<sup>st</sup> century
- Workshops for teachers, parents & students
- 全校自攜平板電腦計劃
- 互動學習應用程式
- Google工作空間
- 翻轉課室
- 支援二十一世紀學習的課室設備3.0
- 教師、家長、學生工作坊



### Multi-media Creative Centre 多媒體創意中心

- SPKC Channel
- Camera work & presentation skills
- Social issues & popular cultures exploration
- 培基頻道
- 提升學生拍攝及表達技巧
- 探索社會議題及流行文化

### E-Administration 電子行政

- Smart cards for attendance taking & library circulation services
- E-notice & e-payment
- E-class app for parents
- 智能卡點算出席及借書服務
- 電子通告及繳費
- E-class 家長應用程式







## The Multiple Intelligence Development Programmes 多元智能發展課程

Under the optimization of the senior secondary curriculum, the school has taken the opportunity to offer taster programmes engaging students in other learning experiences to develop interests, abilities and aspirations. The Multiple Intelligence Development Programmes (MID), piloted in academic year 2021-2022, provide courses that cover aesthetic, sports, languages, and science and technology.

自高中課程優化，中四及中五學生可享有更大空間發展多元智能。本校於2021-22學年起為學生提供了一系列跨學科、興趣培養、專業技能、職業體驗等多元智能發展課程，其中包括美術、體育、語文、科學與科技。

Ceramic Glazing  
陶瓷上釉

Graffiti  
塗鴉

Jewellery Design  
珠寶設計

Get Fit!  
健身

Fencing  
劍擊

Floor Curling  
地板冰壺

English Among Us  
日常生活英語

Japanese  
日語

Korean  
韓語

German  
德語

Be a Youtube Specialist!  
成為Youtube專家

Everyone Can Code  
編碼

Forensic & Food Science  
法證及食物科學

Minecraft- Craft Mine!  
我的世界 - 創造世界

Introduction to 3D Animation  
3D 動畫創作





## Our Facilities 學校設施



The School has renovated the covered playground into a multi-purpose facility, suitable for PE lessons, form assemblies and all kinds of gatherings. It also provides a sanctuary for spiritual activities.

有蓋操場改裝後，成為體育課、週會及各式聚會場地，亦為屬靈活動提供一個寧靜舒適的環境。



MC<sup>2</sup> is dedicated to cultivate the interests of media production. Students can also gain hands-on training of practical skills, e.g. rendering and editing, with advanced equipment.

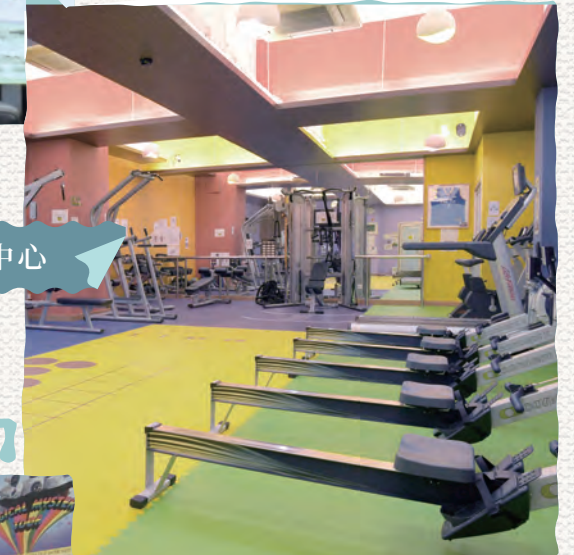
多媒體創意中心旨在培養學生對多媒體創作的興趣，中心以先進的設備，為學生提供有關領域的技能培訓。



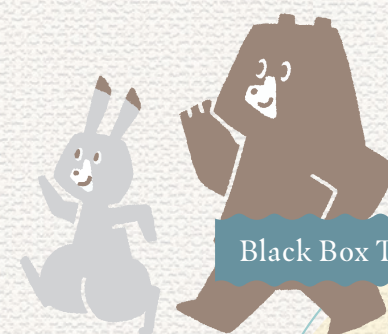
Learning Centre 學習中心



Fitness Centre 體適能中心



Radio Station 校園電台



Black Box Theatre 黑盒劇場







happy school life!







## Student financial assistance & scholarship scheme

### 學生獎助學金計劃

A total amount of about two million dollars, 10% of the total tuition fee, will be budgeted for this purpose in every academic year. Highlight of the scheme includes:

每年學校均將學費收入百分之十投放於此計劃內，總額接近港幣二百萬。其中項目包括：

School Fee Remission  
學費減免

Student Activity Subsidies  
學生活動資助

Emergency Family Support  
緊急家庭支援

LEWOWA Subsidies  
學習無疆界資助

For eligible pre-S1 students  
為中一新生而設

Tomorrow's Leader Scholarship  
明日領袖獎學金

Promising Student Scholarship  
明日之星獎學金

Primary School Principal  
Recommendation Scholarship  
小學校長推薦獎學金

All-round Development Scholarship  
全人發展獎學金

Academic Excellence Scholarship  
學業卓越獎學金

Outstanding CCA /  
OLE Performance Scholarship  
聯課活動/其他學習經歷  
傑出表現獎學金





## School Fee Remission 學費減免



### Objective 目標

The School will make sure students studies in Stewards Pooi Kei College (SPKC) will not be hindered by financial difficulties.

學校會確保家長的財政狀況不會影響學生就讀香港神託會培基書院的機會。

### Principles 原則

1. The School primarily follows the rules and regulations of the Student Financial Assistance Schemes administered by the Working Family and Student Financial Assistance Agency (Student Finance Office) and Education Bureau (EDB) to award FULL assistance or HALF assistance to applicants. If parents have not made applications to the Student Finance Office (SFO), the School will refer to the Means Test specified by the SFO for assessment. For those applicants who fail in the Means Test, the School will further consider their applications on a case-by-case basis. Students from families under Comprehensive Social Security Assistance Scheme (CSSA) will be given full assistance. If necessary, the School may request parents to provide relevant proof.

學校會以在職家庭及學生資助辦事處(學生資助處)財政資助計劃及教育局的守則為準則批出全額資助或半額資助。若家長未有向學生資助辦事處作出申請,校方將按學生資助處的評估方法作出批核。若申請者未能合乎有關資格,校方則會按個別情況作出批核。申領綜合社會保障援助計劃之家庭,其子女可享全額資助。在有需要時,學校可能會要求家長提供具體證明。

2. The School respects the privacy of all applicants and follows the guidelines of the Office of the Privacy Commissioner for Personal Data, Hong Kong (PCPD) on handling all the applications.

學校尊重所有申請者的私隱,並遵照香港個人資料私隱專員公署的指引處理所有申請程序。

With reference to the Student Finance Office, the school adopted the following means test to assess the eligibility of a family for student financial assistance and its assistance level. Based on the following formula, the "Adjusted Family Income" (AFI) mechanism will be used:  
參考「學生資助處」的資格評估方法後,本校將採用「調整後家庭收入」機制進行入息審查,以評定申請人的資助資格及幅度。「調整後家庭收入」機制所採用的算式如下:

$$\text{AFI 調整後家庭收入} = \frac{\text{Gross annual income of the family 家庭全年總收入}}{\text{Number of family members 家庭成員人數} + (1)}$$

Gross annual income of the family includes the annual income of the applicant and his / her spouse; 30% of the annual income of unmarried child / children residing with the family if applicable; and contribution from relatives / friends if applicable. (Excluding Mandatory Provident Fund or Provident Fund contribution by employee in calculation.)  
家庭全年總收入包括申請人及其配偶的全年收入,與申請人家庭同住的未婚子女的全年收入的30% (如適用),以及親友給予的津助(如適用)。(計算時不包括僱員強積金及公積金供款)

The members of a family normally refer to the applicant, his / her spouse, unmarried child / children residing with the family and the dependent parent(s) who are supported by the applicant and / or his / her spouse.

家庭成員通常是指申請人、申請人的配偶、與申請人家庭同住的未婚子女,以及由申請人及/或其配偶供養的父母。

For single-parent families of 2 to 3 members, the 'plus 1 factor' in the divisor of AFI formula will be increased to 2.

二至三人的單親家庭,公式中除數的(+1)將會增加至(+2)。

### Level of Fee Remission 學費減免幅度

The AFI eligibility benchmarks for various levels of assistance in the 2022/23 school year are listed below. Please note that the AFI is not the average monthly income of a family.

下表詳列2022/23學年的「調整後家庭收入」組別的資助幅度。請注意「調整後家庭收入」並不是家庭每月的平均收入。

AFI Groups (HK\$) 「調整後家庭收入」機制下數值	Level of Assistance 資助幅度
0 – 42,559	*Full 全額
42,560 – 82,295	Half 半額
> 82,295	Ineligible 不合資格

The ceiling of deductible medical expenses for each family member is \$22,300 per year in 2022/23.

\* The AFI thresholds for full level of assistance for 3-member and 4-member families are \$51,523 and \$47,402 respectively in the 2022/2023 school year. For 2-member single-parent families and 3-member single-parent families, they are regarded as 3-member families and 4-member families respectively for determining the AFI thresholds for full level of assistance and calculation of AFI.

\*2022/2023學年 3人家庭和4人家庭可獲全額資助的「調整後家庭收入」上限分別為 \$51,523和\$47,402。就2人和3人單親家庭而言,有關